



# THE NEW CONNECTION PLACE PROJECT

*Together For  
The Community!*

## HOW MUCH?

The total estimate to build the New Connection Place is \$950,000-\$1,300,000. This includes permitting, engineering, environmental conditional improvements, site development, exterior/interior building, fully paved parking lot, and landscaping. We believe this number is attainable with your help!

## WHAT DO WE HAVE SO FAR?

As of fall of 2018 we currently have in our building fund \$300,000 which can cover our engineering and site work, to get us started. We rely on donations of those in the congregation, the community and the generous benevolence anyone who desires bring a wonderful facility to the Birch Bay area.

## HOW CAN YOU PARTNER WITH US?

You can give, either with a one-time gift or as a continual pledge. Giving Response cards are available at CTK North Bay's Connection Place, or you can give online by going to <https://give.ctk.church/NorthBay/>

**Thank you** in advance, and we appreciate your generosity!

**ctk**) Christ the King  
Community Church  
NORTH BAY

**O**ur vision is to unite together to provide an irresistible and inviting place where all people in our community can connect with one another and God.

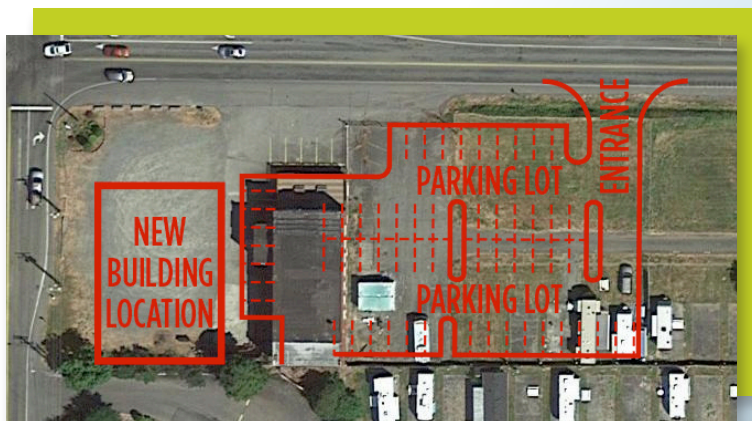
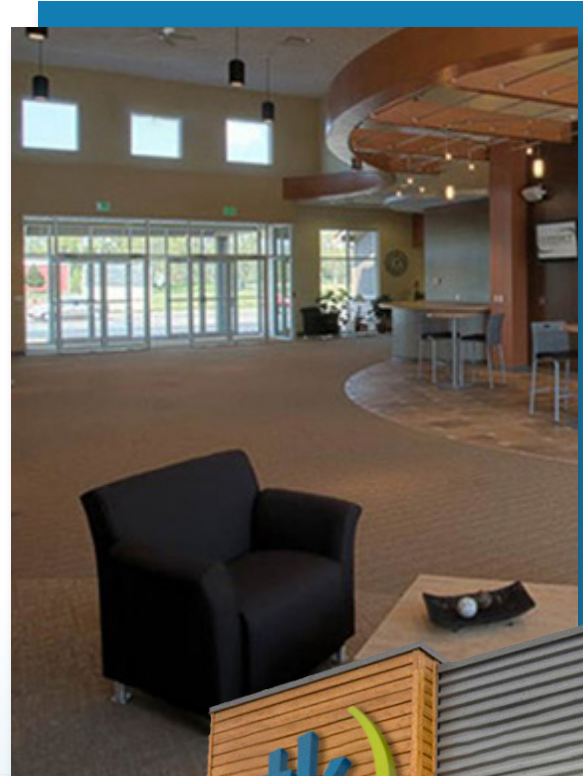
## WHY A NEW SPACE?

As wonderful as the history and heritage of our current building is, the requirements to upgrade a 1929 structure are not economically feasible nor sustainable in the long term for our future in the community. Therefore, our hope is to provide a new, accessible and comfortable space that not only meets the current needs of the church but a place that is available for our community to utilize. From weddings to business conferences, social clubs and support groups, we want everyone to know this is a place for all in the community.

# Together For The Community!

## WHAT IS BEING BUILT?

The project will include an approximately 10,200 sq ft building. The first floor will provide space for weekly worship services and children's programs, as well as large and small events, and will be an informal gathering space for our community. The mezzanine level will be a partial second floor with additional rooms for offices, storage and conference space. Our goal is practical function over fanciness!



Images are for vision purposes and are not representative of final building design